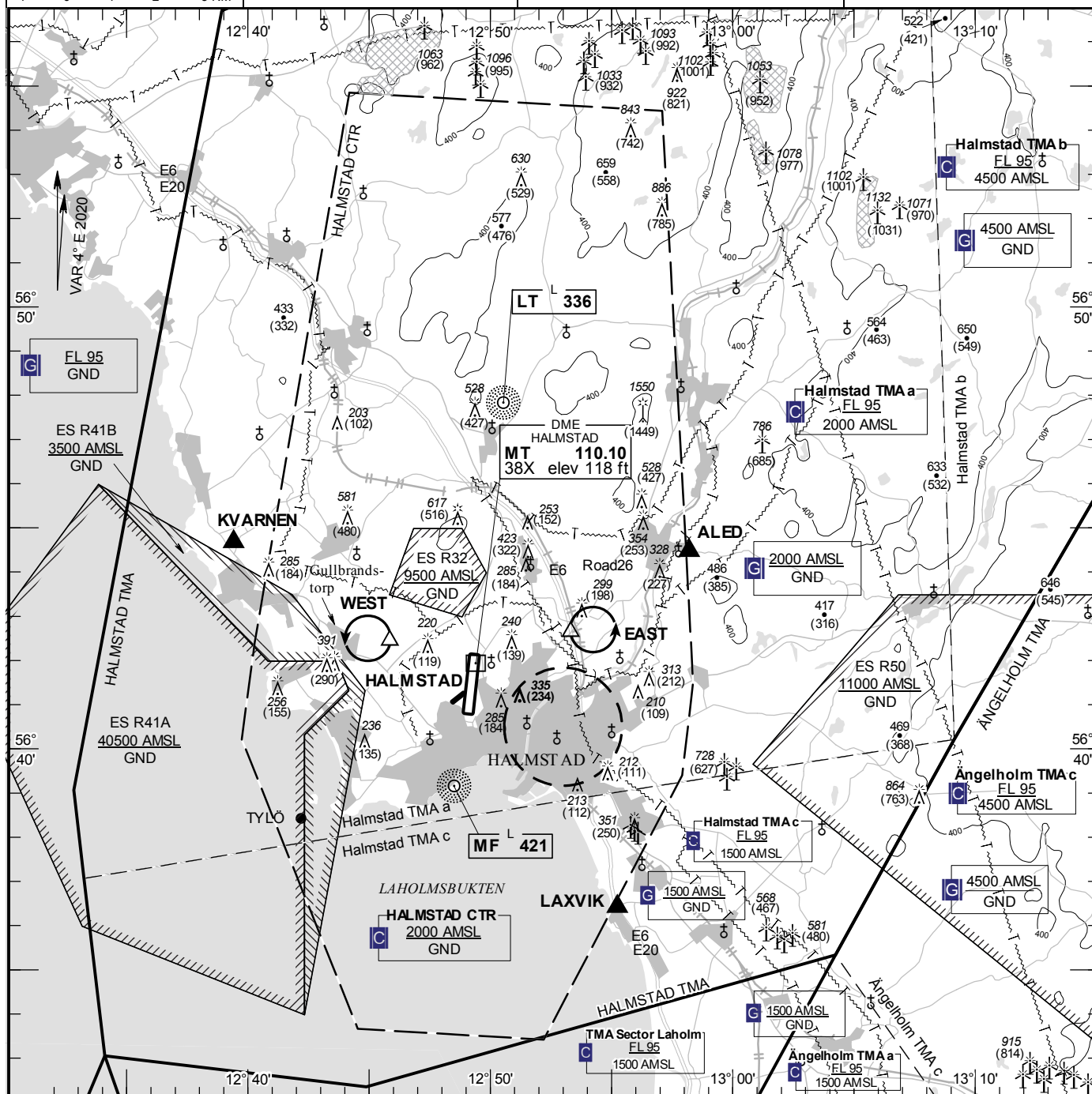


TA 5000 AMSL

**HALMSTAD
SWEDEN**



- 1 SQUAWK 7600
- 2 Enter CTR via KVARREN – Holding WEST at or below 1500 ft AMSL to traffic circuit. Transmit blind your intentions.
- 3 Flash LDG-lights and watch TWR for optical signals.

Sector LAHOLM: ATC provider see ENR 2.1

| RWY NR | THR ELEV | PAPI (MEHT) |
|-----------|-------------|-----------------------|
| 01 | 64 ft | Left/3.25° (56 ft) |
| 19 | 84.2 ft | Left/3.00° (51 ft) |

| | |
|---------|------------------|
| KVARNEN | 564440N 0123925E |
| ALED | 564428N 0125812E |
| LAXVIK | 563625N 0125514E |

EAST: Hold east of intersection E6 and road 26, east of point 564238N 0125319E

WEST: Hold at crossroad east
Gullbrandstorp, west of point
564226N 0124550E

See GEN 2.3